

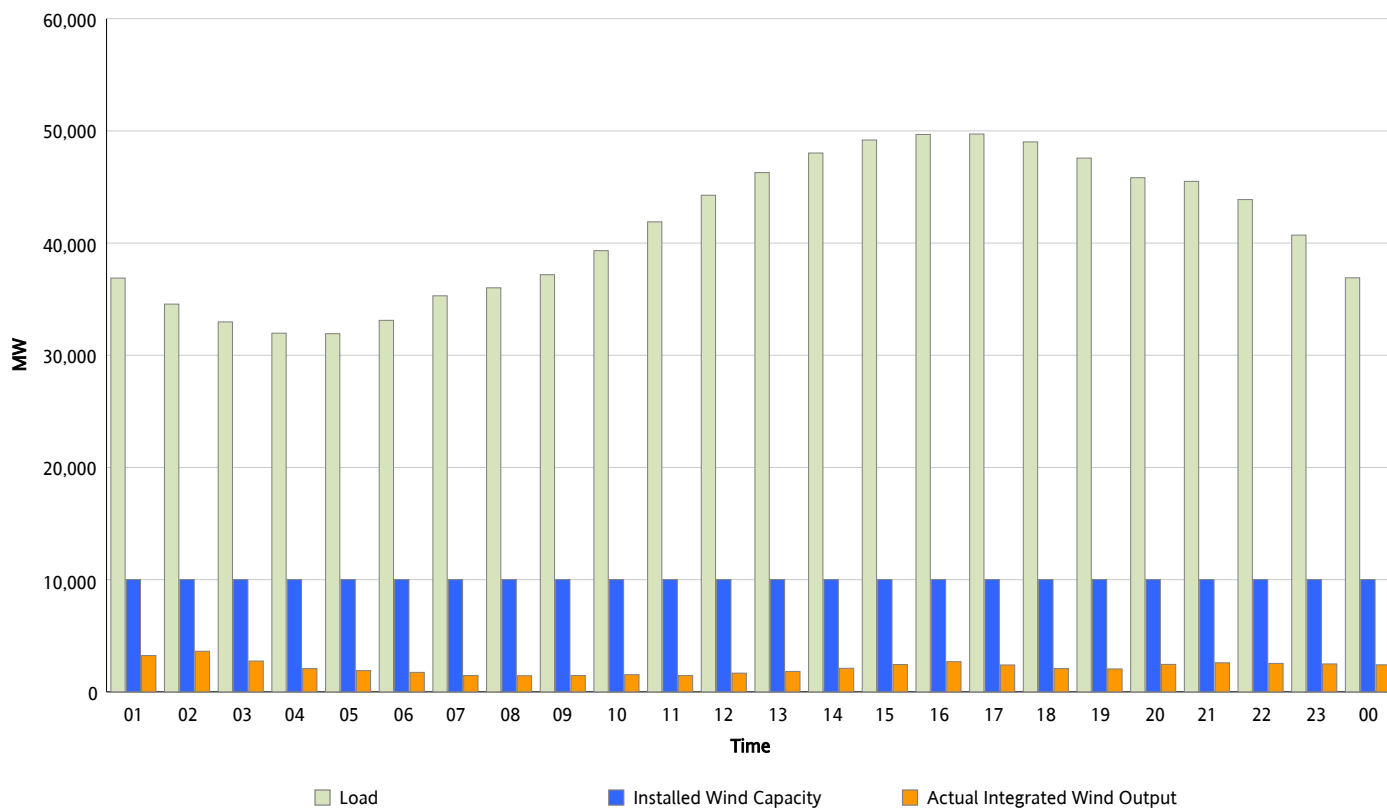


ERCOT Grid Operations

Wind Integration Report : 08/21/2012

Peak Load	49,722 MW
Load Peak Hour (HE)	17
Wind Over Peak	2,398 MW
Wind Record 06/19/12	8,368 MW
Max Wind Value*	4,202 MW
Wind Peak Time	01:54
Wind Integration %	12.43 %

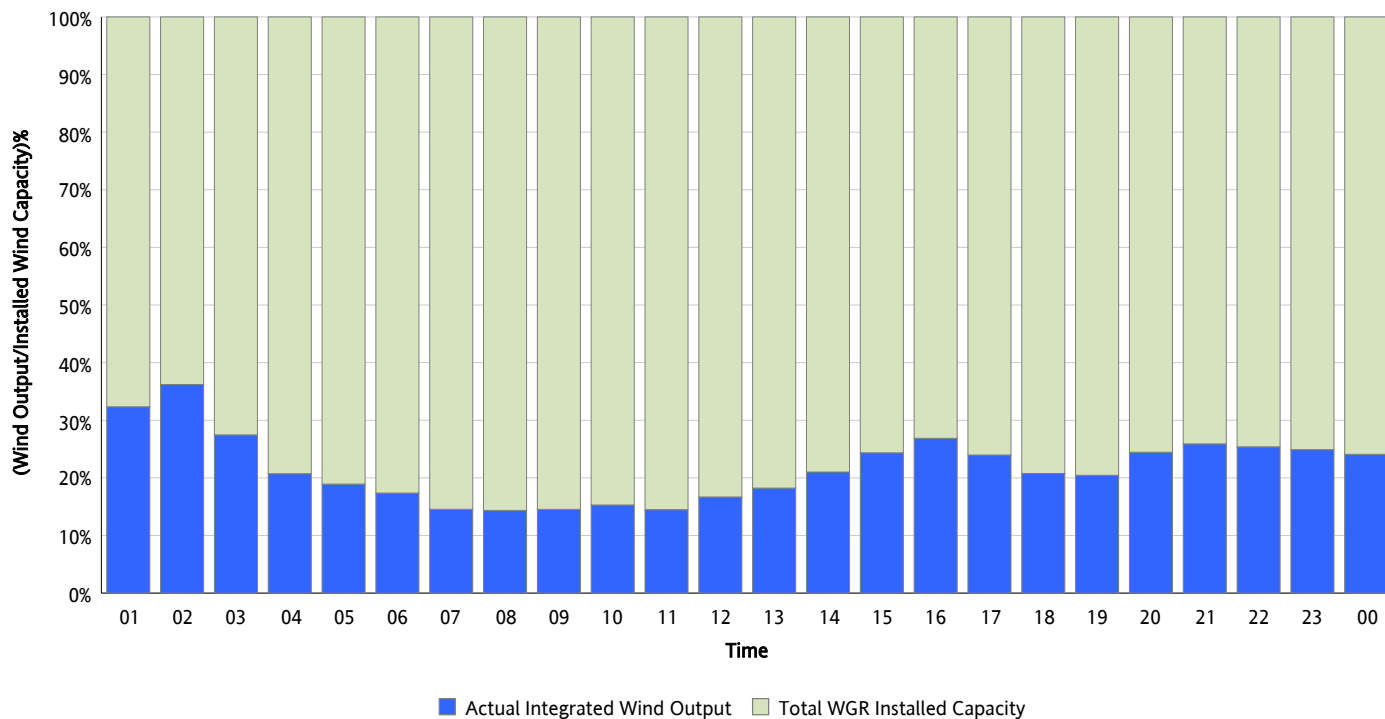
Hourly Average Actual Load vs. Actual Wind Output
08/21/2012



* Wind Record and Wind Max represent instantaneous values and the rest of the values are integrated over the hour

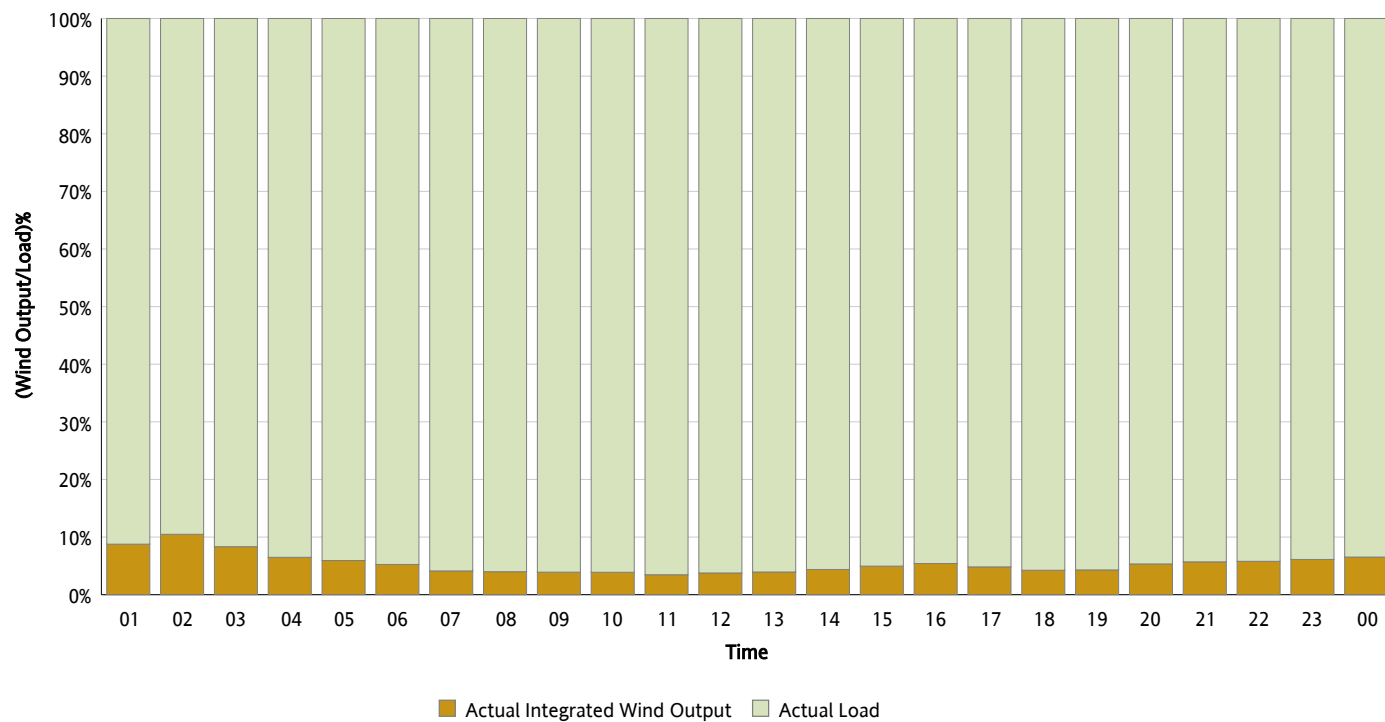
Actual Wind Output as a Percentage of the Total Installed Wind Capacity

08/21/2012



Actual Wind Output as a Percentage of the ERCOT Load

08/21/2012



ERCOT Load vs. Actual Wind Output

08/14/2012 - 08/21/2012

